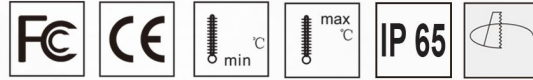

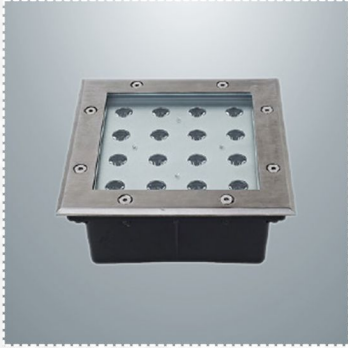


LED UNDERGROUND LIGHT



| | | | | | | | |
|-----|----------------|-------|--------|---------------------|-------------------------------|---|-------|
| CRI | luminous angle | IP | Life | Ambient temperature | Color | Green | Save |
| >80 | 5°~120° | IP 65 | 50000H | -35°C 65°C | 3000K > 80lm/w F>21lm/W |  | \$80% |



| | |
|-----------------------|--------------|
| PRODUCT MODEL | KONS KOU609 |
| WORKING VOLTAGE | AC220V-240V |
| POWER | 16X1W, 24X1W |
| COLOR RENDERING INDEX | Ra>80 |
| RATED LIFE HOURS | 50,000H |
| COLOR TEMPERATURE | 3000K-6000K |
| OPERATING TEMPERATURE | -35-+40 |

DESCRIPTIONS

- High efficiency, low energy consumption.
- Good quality beam.
- Long life span 50000 hours.
- Flexible control, Dimming by changing current
- Ecological, The waste can be recycled.
- No pollution and mercury.

Note

- ⚠ This product must be installed in accordance with the applicable installation code by a person familiar with the construction and operation of the product and the hazards involved.
- ⚠ Do not attempt to install or use a fixture until you read and understand the installation instructions and safety labels.
- ⚠ Fixtures have line voltage risk of shock and no user serviceable parts. Do not attempt to open them.
- ⚠ Do not hot swap fixtures. Ensure that power to the series is off before connecting or disconnecting individual fixtures.
- ⚠ Do not use a fixture if the lens, housing, or power cables are damaged.
- ⚠ Do not use a fixture for any voltage for which it is not rated. Do not exceed the specified voltage and current input for any fixture.
- ⚠ Caution led radiation do not stare into beam class 2 LED products.